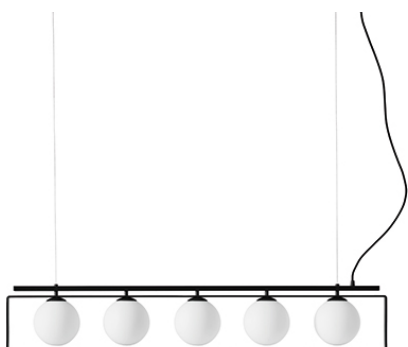


MIDJ



Suspense suspension

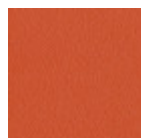
design Studio F+B Design, 2020

Suspense diffused and direct light lamp. The spheres that make up the diffuser are made of mouth blown glass. Five satin glass spheres slide inside a black rectangle, in an exercise of timeless shapes.

The chandelier is fixed to the ceiling with two steel suspension cables and mechanical attachment, the electric cable is covered in black silk. Ceiling rose included.

Colors and Materials

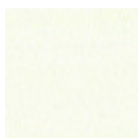
Structure



Papaya orange steel



Light blue metal



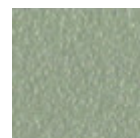
White steel



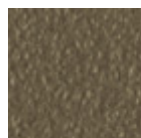
Ocean blue steel



Bronze metal



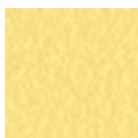
Sand steel



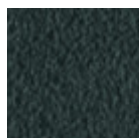
Fango steel



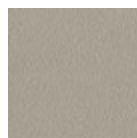
Golden yellow metal



Pastel yellow steel



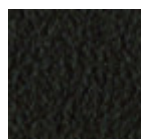
Grafite metal



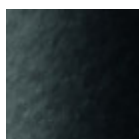
Ash grey metal



Light grey steel



Brown steel



Black steel



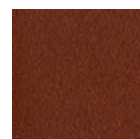
Ocher steel



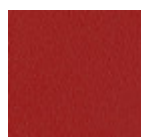
Facepowder pink metal



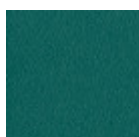
Red steel



Bulgaro red metal



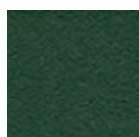
Cherry red metal



Pine green steel

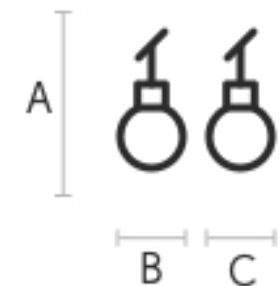


Sage green metal



Dark green metal

Dimensions



A (cm)	B (cm)	C (cm)
(inch)	(inch)	(inch)
20	120	15
7.9	47.2	5.9

Volumetric Details

Weight 11.25 Kg
Volume 0.114 mc
Package 1

Certifications



Classe I

Materials Certifications

Dark green metal

The technologies used in the previous phase of powder coating play a fundamental role in the final result of the processing. They are in fact essential to increase adherence paint on the metal surface and then guarantee its duration over time. The metal frames, following a total cleaning of the surface, pass through chemical conversion processes, creating a compact base that allows for better adhesion of the subsequent treatment. In the last phase the object subjected to the powder coating process is placed in a polymerization oven, going to form an adherent and extremely tight layer durable. This particular paint job is ideal for outdoor use.

To clean the surface, use a damp microfiber cloth with neutral soap or specific metal cleaning products. Avoid hitting or rubbing the surface with sharp objects. Do not use scourers or other abrasive materials, since they would inevitably scratch the surface. Do not leave rusty iron objects on the surface for too long.

These surface treatments are not suitable for outdoor use, but they guarantee excellent resistance to frequent use, dirt and dust.