

MIDJ

## Lea madia H73 Sideboard

design Paolo Vernier, 2019

Lea sideboard, storage unit for living area with swing doors in wood or covered in fabric, faux leather or leather. Top in ceramic.

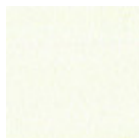
Lea sideboard is available in two versions: with a height of 55 cm or 73 cm. The 55 cm version features an open shelf in glass.

Supported by the conical feet that maintain the line of the collection, the Lea sideboard is characterized by the extreme lightness of the shapes and the soft design. The coatings of the doors embrace the choice of elegant fabrics or traditional materials making it versatile and original to furnish contemporary environments with continuity.



### Colors and Materials

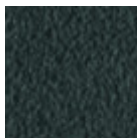
#### Base



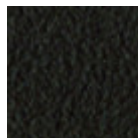
White steel



Sand steel



Grafite metal



Brown steel

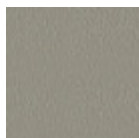


Black steel

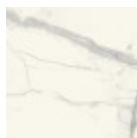


Black Nickel

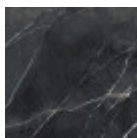
#### Top



**Laquered MDF**  
5 Colors

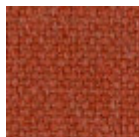


**Cristalceramica**  
marmo statuario  
bianco opaco



**Marble calacatta**  
black  
bushhammered  
crystalceramic

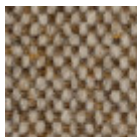
#### Doors



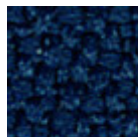
**Cotton Club fabric**  
14 Colors



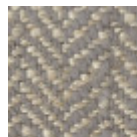
**Fenix Wool fabric**  
16 Colors



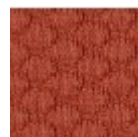
**Main Line Flax fabric**  
16 Colors



**Mirage fabric**  
15 Colors



**Second fabric**  
11 Colors



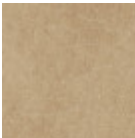
**Visual fabric**  
13 Colors



Velvet Superb  
15 Colors



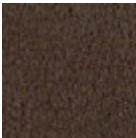
Secret faux leather  
23 Colors



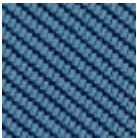
Vintage faux leather  
12 Colors



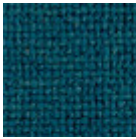
Fiore leather  
21 Colors



Vintage leather  
8 Colors



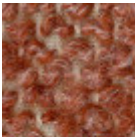
Tessuto Oceanic  
13 Colors



Manhattan fabric  
13 Colors



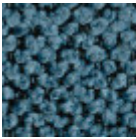
Yoredale fabric  
14 Colors



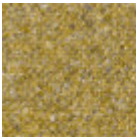
Caltagirone fabric  
11 Colors



Flame Fabric  
7 Colors



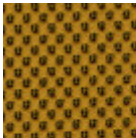
Gemma fabric  
10 Colors



Gyre fabric  
11 Colors



Jumper fabric  
5 Colors



Network fabric  
9 Colors



Novabuk fabric  
17 Colors



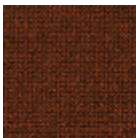
Ouche Fabric  
7 Colors



Plain Fabric  
7 Colors



Remix 3 fabric  
19 Colors

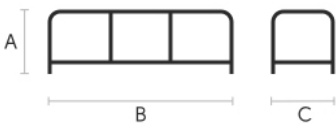


Renewed Loop fabric  
10 Colors



Uniform Melange Fabric  
12 Colors

## Dimensions



	A (cm) (inch)	B (cm) (inch)	C (cm) (inch)
Lea H73 (cm) (inch)	73 28.7	210 82.7	48 18.9
Lea H55 (cm) (inch)	55 21.7	180 70.9	40 15.7

## Volumetric Details

Weight 90 Kg  
Volume 1.52 mc  
Package 2

## Materials Certifications

Cristalceramica marmo statuario  
bianco opaco

Ceramic tops give life to an extremely resistant top, suitable for placement in highly used environments. The properties that the ceramic tops include are high water repellency, heat resistance, scratch resistance and high durability.

### CLEANING AND MAINTENANCE

For daily cleaning we recommend using a microfiber cloth, moistened with hot water and possibly neutral detergents, making sure to rinse them in case of use. Do not use abrasive scourers or cleaners. To remove any dried residues deposited on the surface, proceed with the use of a wooden or plastic scraper. Some types of stains, if not promptly removed, could leave a more or less visible permanent ring. In case of contact with acidic liquids (such as pure lemon juice) or highly pigmented liquids (such as red wine, coffee, Coke) remove promptly and rinse with a damp and clean cloth. The persistence of the stain over time hinders its complete removal. It is possible to use bleach to remove the most stubborn stains: with a damp cloth rub the surface for a few seconds. Most of the stains will no longer be visible within 2-3 minutes of application, then rinse with water and dry. These tips are cleaning recommendations and do not guarantee complete stain removal.

We recommend that you always test the cleaning method on a hidden part of the item to check the resistance of the material.

Colour samples are to be considered approximate for each product. Slight color differences between a lot and the other are to be considered normal.

## Materials Certifications

### **Marble calacatta black bushhammered crystalceramic**

Ceramic tops give life to an extremely resistant top, suitable for placement in highly used environments. The properties that the ceramic tops include are high water repellency, heat resistance, scratch resistance and high durability.

#### CLEANING AND MAINTENANCE

For daily cleaning we recommend using a microfiber cloth, moistened with hot water and possibly neutral detergents, making sure to rinse them in case of use. Do not use abrasive scourers or cleaners. To remove any dried residues deposited on the surface, proceed with the use of a wooden or plastic scraper. Some types of stains, if not promptly removed, could leave a more or less visible permanent ring. In case of contact with acidic liquids (such as pure lemon juice) or highly pigmented liquids (such as red wine, coffee, Coke) remove promptly and rinse with a damp and clean cloth. The persistence of the stain over time hinders its complete removal. It is possible to use bleach to remove the most stubborn stains: with a damp cloth rub the surface for a few seconds. Most of the stains will no longer be visible within 2-3 minutes of application, then rinse with water and dry.

These tips are cleaning recommendations and do not guarantee complete stain removal.

We recommend that you always test the cleaning method on a hidden part of the item to check the resistance of the material.

Colour samples are to be considered approximate for each product. Slight color differences between a lot and the other are to be considered normal.