

101

C O P E N H A G E N



Bloom Tray, Big - Rose

Designed by

Kristian Sofus Hansen &
Tommy Hyldahl

Bloom Tray, Big - Rose

Product Description

Inspired by floral shapes, the Bloom Tray transforms soft organic forms into a sculptural ceramic object.

Elegantly sculpted, the tray is characterized by overlapping flower leaves that fade into one another, recalling the different stages of a flower from closed to open. The interplay of light and shadow across its contours creates a dynamic expression that changes throughout the day.

Finished in Rose, a whisper-soft pale pink inspired by the delicate beauty of a lotus petal touched by early light, the tray brings a sense of calm and understated elegance to its surroundings. Gentle and airy, the colour carries a powdery softness and quiet warmth that feels almost neutral. Its serene presence enhances the sculptural form while adding lightness, balance, and subtle sophistication to any interior.

The Bloom Tray is an interpretation of 70s floral-inspired design with a more raw and clean expression. The smoothly curved surface is contrasted by a strong underlying geometry and enriched by a beautiful play of shadows around the depths of the form.

With its generous proportions, the Bloom Tray, Big makes a striking centrepiece on dining tables, coffee tables, consoles, or open shelving. Style it individually as a statement object or combine it with Bloom Vases and additional Bloom Trays to create a sculptural arrangement.

The surface is hand glazed to achieve its unique texture. As this is a handmade product, colours may vary slightly. Not food approved.

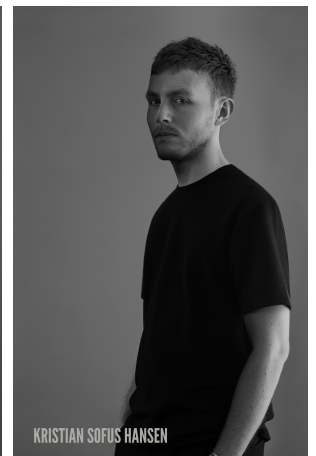
Designer Description

Tommy Hyldahl and Kristian Sofus Hansen intertwine their distinct sensibilities to create designs where storytelling, materiality, and timeless form meet in quiet harmony.

With a background in fashion, Tommy brings an intuitive eye for trends, colors, and textures. His process is one of layering histories, blending details and references from past design periods and reimagining them into something fresh and contemporary. Each collection unfolds as a narrative, evolving from concept to creation, with every element contributing to a greater story.

Kristian, who has lived and studied in Japan, seeks to unite Japanese aesthetics with Danish design, creating a characteristic twist on simplicity itself. His work is defined by the search for subtle, original details that elevate each piece with a unique signature. Drawing inspiration from art and sculpture, his creative process unfolds in new and exciting ways, always striving to craft designs that are both functional and timeless.

Together, they craft design that transcends time, poetic yet practical, expressive yet enduring.



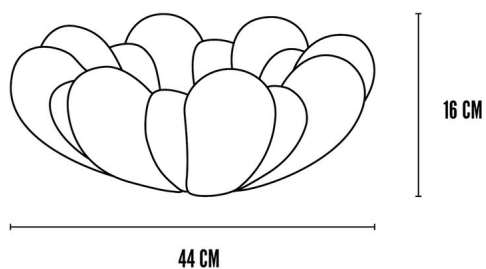
Bloom Tray, Big - Rose

Main

| | | | |
|--------------|------------------------|----------------|-------|
| SKU | 263085 | Product Family | Bloom |
| Product name | Bloom Tray, Big - Rose | Color | Rose |
| Product Type | Tray | Size | Big |
| | | Unit | Piece |

Logistics

| | | | |
|----------------------|---------------|-------------------------|------------|
| EAN number | 4251501416579 | Package - CBM | 0.056 |
| Package height in cm | 22.00 | Package - Weight KG | 5.000 |
| Package width in cm | 51.50 | Tariff Code No | 6913909390 |
| Package length in cm | 49.50 | Country of origin | China |
| Suitable for Courier | Yes | Quantity of Inner Boxes | 1 |



Bloom Tray, Big - Rose

Product

| | | | |
|-------------------|---------|-------------------|--------|
| Materials | Ceramic | Net weight in kg | 4 |
| Item Height in cm | 16.00 | Space Suitability | Indoor |
| Item width in cm | 44.00 | Waterproof | No |
| Item length in cm | 44.00 | Gift Box | Yes |
| | | Frostproof | No |

Bloom Tray, Big - Rose

Family Description Text

Inspired by floral shapes, Bloom emphasizes soft and organic forms in a collection of sculptural vases and trays. Elegantly sculpted, each piece is characterized by flower leaves fading into each other, reminiscent of the different stages of a bloom from closed to open. Bloom is an interpretation of 70s floral-inspired design, but with a more raw and clean expression. The smoothly curved surface is contrasted by a strong underlying geometry and enriched by a beautiful play of shadows around the depths of the form. Due to its expressive design, Bloom changes character throughout the day, depending on the position of light and shadows.

Color Description

Rose is a very pale, whisper soft pink that holds the quiet elegance of a lotus petal touched by early light. The color feels gently time worn, a blush softened to near neutral that offers warmth without brightness and calm without coolness. Its lotus like presence gives it a serene, almost meditative quality. The shade feels translucent and airy, as if illuminated from within by a soft, diffused glow. This creates a powdery, understated softness that brings both tranquility and subtle sophistication to any setting. As a near neutral, Rose adds warmth with restraint, settling gently into its surroundings while still offering a refined hint of color. It pairs naturally with soft greys, warm whites, muted taupes, and gentle greens, creating spaces and designs that feel peaceful, light, and elegantly balanced.

Bloom Tray, Big - Rose

Maintenance Guide Description

Our hand-painted ceramic pieces are crafted as decorative objects, designed to age gracefully when cared for with gentleness.

The outer surface of our pieces is hand-painted and should be treated with the same reverence dust lightly with a soft, dry cloth, allowing the painted character to remain untouched. Water, harsh cleaners, or abrasives should never meet this surface, as they can disturb its delicate finish.

Vases are sealed within and may hold water for fresh flowers. Clean their interiors gently with lukewarm water, then dry carefully, taking care that no moisture touches the painted exterior.

To preserve their vibrancy, keep each piece away from prolonged sunlight and sudden shifts in temperature. With such mindful care, every ceramic piece will hold its artistry, warmth, and timeless presence for years to come.

Materials Description

Ceramic is one of the oldest and most enduring materials, celebrated for its strength, versatility, and timeless beauty. Shaped from natural clay and fired at high temperatures, it achieves a density and durability that make it ideal for both functional and decorative use. Its smooth surface provides the perfect canvas for craftsmanship.

Our ceramic is elevated through hand painting, where layers of pigment are carefully applied by skilled artisans. This process creates subtle variations in tone, texture, and detail, ensuring that no two pieces are ever alike. The result is a material that combines resilience with individuality practical enough for everyday use, yet refined enough to stand as an object of art.

Hand-painted ceramic embodies the harmony of nature, craft, and time: a surface that carries both the permanence of fired clay and the soulful presence of the human hand.